



K 105 UHF



Bedienungsanleitung	S. 2
User Instructions	p. 9
Mode d'emploi.....	p. 16
Istruzioni d'uso	p. 23
Modo de empleo.....	p. 30
Instruções de uso	p. 37

Contents	Page
1 Precautions	9
2 Description	10
2.1 General	10
2.2 Unpacking	10
2.3 K 105 UHF Headphones	10
2.3.1 Controls	10
2.4 T 105 UHF Transmitter	10
2.4.1 Controls	10
2.4.2 Status LED (12)	11
3 Audio and Power Connections	11
3.1 Connecting the Transmitter to Your Audio Source	11
3.1.1 Connecting to a Headphones Output	11
3.1.2 Connecting to LINE or REC Outputs	11
3.2 Connecting the Transmitter to AC Power	11
4 Operation	12
4.1 Charging the Batteries inside the Headphones	12
4.2 Setting Up the System	12
4.3 Replacing Batteries	12
4.4 Important Notes	13
5 Cleaning	13
6 Troubleshooting	13
7 Specifications	15
8 Warranty Conditions	15

1 Precautions



- Operate the K 105 UHF headphones with two AAA size 1.2 V rechargeable (supplied) or 1.5 V dry batteries only. **1.1**
- Never try to charge dry batteries using the transmitter's charging feature. **1.2**
- Before charging the headphones batteries, always make sure that the batteries in the headphones are rechargeable types. **1.3**
- Dispose of spent dry or rechargeable batteries conforming to local waste disposal rules. Never throw batteries into a fire. **1.4**
- Operate the T 105 UHF transmitter with the supplied 9 VDC, 200 mA AC adapter only. Check that the AC voltage stated on the AC adapter is the same as that available in your country. Using the transmitter with a different AC adapter voids the warranty. **1.5**
- Always switch the headphones OFF after use. **1.6**
- Never try to open the headphone or transmitter case. Refer servicing to qualified service personnel only. **1.7**
- Never place the equipment near heat sources such as radiators or electric heaters or expose it to direct sunlight, excessive dust, humidity, rain, temperatures below freezing, or impacts. **1.8**
- Never use petroleum-based cleaners or paint thinners to clean the headphones or transmitter. **1.9**
- If you do not use your headphones system for an extended period of time (e.g., when traveling), disconnect the AC adapter from the AC outlet. **1.10**
- Also refer to section 4.4 Important Notes. **1.11**



2 Description

2.1 General

Dear customer:

Thank you for purchasing an AKG product.

This headphones system

- uses state-of-the-art UHF radio transmission technology;
- uses automatic gain control (AGC) to modulate the transmitter RF section for high transmission quality;
- connects to any audio, video, TV set, or PC with a headphones or line output;
- provides perfect sound reproduction, full mobility, and signal transmission through walls and ceilings over a distance of up to 330 feet (100 m);

The K 105 UHF system is available for two different LPD frequency bands: 914 MHz for the US and 864 MHz for various European countries.

The K 105 UHF system lets you share your listening enjoyment with other persons. You can operate your transmitter with several headphones simultaneously.

K 105 UHF headphones are also available separately.

In order to make optimum use of the benefits of your K 105 UHF, please **take a few minutes to read the instructions below carefully before operating the equipment.**

Please keep the manual for future reference.

2.2 Unpacking

Your headphones system comprises the following components:

- 1 pair of headphones
- 1 transmitter with integrated battery charging feature
- 2 stereo connecting cables with gold plated connectors for linking the transmitter to your audio source: 1 RCA cable, 1 jack cable (mini jack to 2 x RCA connectors)
- 1 mini jack/1/4" jack adapter
- 1 AC adapter for powering the transmitter
- 2 1.2 V AAA size NiCd rechargeable batteries for powering the headphones (inside the headphones)
- 1 charging cable for charging the rechargeable batteries inside the headphones.

If anything is missing, contact your AKG dealer immediately.

2.3 K 105 UHF Headphones

2.3.1 Controls

Refer to fig. 1:

1. POWER: Switches the headphones ON or OFF.
2. Green status LED: Lights constantly when the headphones are ON.
3. Charging jack
4. Battery compartment (beneath the detachable ear pad)
5. TUNING: fine tunes the reception frequency
6. VOLUME: adjusts the headphones volume level
7. Self-adjusting headband

2.4 T 105 UHF Transmitter

Depending on which version you purchased, the T 105 UHF transmitter operates in the 914 MHz or 864 MHz UHF band. The two versions feature the same controls and an antenna integrated in the transmitter case. All operating instructions are the same for both versions.

2.4.1 Controls

Refer to fig. 2:

8. Audio Inputs
- INPUT L/R: RCA input jacks for the left and right channels
- Ⓜ: Stereo mini jack
9. 9 V 0.2 A: Input jack for AC adapter
- 10.A-B-C: This slide switch selects one of three different carrier frequencies.
- 11.Charging jack for charging the rechargeable batteries inside the headphones
- 12.Status LED: Indicates the current status of the transmitter and the built-in charging feature.

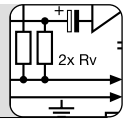
2 Description



If LED is...	Transmitter ...
...lighting green	...is connected to AC power and audio source, and receives signal. Headphones are not connected to transmitter via charging cable. ...is connected to AC power and audio source, and receives signal. Headphones are connected to transmitter via charging cable and switched ON so batteries are not being charged. ...is connected to AC power and audio source, and receives signal. Headphones are connected to transmitter via charging cable. Batteries are inserted the wrong way and are therefore not being charged.
...lighting orange:	...is connected to AC power and audio source, and receives signal. Headphones are connected to transmitter via charging cable and are being charged.
...lighting red:	...is connected to AC power and audio source, and receives no signal. Headphones are connected to transmitter via charging cable and are being charged.
...dark:	...has detected no signal for approx. 4 minutes OR ...is not connected to AC power.

2.4.2 Status LED (12)

3 Audio and Power Connections



You may connect the T 105 UHF transmitter to a headphones output (mini jack or 1/4" jack), LINE, or REC outputs.


3.1 Connecting the Transmitter to Your Audio Source

1. Before connecting the transmitter to your audio source, switch the audio source OFF.
2. Plug the red RCA connector (right channel) on the supplied connecting cable into the red INPUT R jack (8) and the white RCA connector (left channel) into the white INPUT L jack (8) on the transmitter rear panel.
3. Connect the stereo mini jack plug on the connecting cable to the headphones output of your audio source.
4. If the headphones output on your equipment is a 1/4" jack, plug the supplied mini jack to 1/4" adapter jack onto the connecting cable. Connect the adapter jack to the headphones output.

3.1.1 Connecting to a Headphones Output

Refer to fig. 3:

Refer to fig. 4:

1. Before connecting the transmitter to your audio source, switch the audio source OFF.
2. Plug the red RCA connector (right channel) on the supplied connecting cable into the red LINE OUT R or REC OUT R socket and the white RCA connector (left channel) into the white LINE OUT L or REC OUT L socket on your audio source.
3. Connect the stereo mini jack plug on the connecting cable to the  jack (8) on the transmitter rear panel.

3.1.2 Connecting to a LINE or REC Output

Refer to fig. 5:


Refer to fig. 6:

1. Connect the cable on the supplied AC adapter to the 9 V 0.2 A jack (9) on the transmitter rear panel.
2. Check that the AC voltage stated on the AC adapter is the same as that available in your country. If it is, connect the AC adapter to a convenient AC outlet. The transmitter will automatically be ready to operate.

3.2 Connecting the Transmitter to AC Power

Refer to fig. 7:

Refer to fig. 8:

Note that the transmitter will switch on as soon as it detects an audio signal at the INPUT jacks or the  jack.
Note that the transmitter will automatically switch OFF about 4 minutes after switching OFF your audio source (stereo, VCR, TV set, etc.).



4 Operation

4.1 Charging the Batteries inside the Headphones In order to ensure the longest possible service life for the rechargeable batteries, we deliver them uncharged. Therefore, **charge the supplied batteries before first operating your headphones system.**

The supplied batteries have been inserted into the headphones for your convenience.

WARNING: If you operate the headphones on dry batteries (see section 4.3), never try to charge the batteries using the transmitter's charging feature. This would cause serious damage to your headphone system. Dispose of used batteries conforming to local waste disposal rules.

1. Check that power to the headphones is switched off. If the green status LED (2) is glowing, switch the headphones off with the POWER switch (1). The green status LED (2) will extinguish.
2. Check that the transmitter is connected to AC power. If it is not, connect the transmitter to AC power referring to section 3.2.
3. Use the supplied charging cable to connect the headphones to the charging jack (3) on the transmitter.

Refer to fig. 9:

The status LED (12) on the transmitter will light red to indicate that the batteries in the headphones are being charged. If signal is present at the transmitter audio input, the status LED (12) will light orange.

The batteries will be fully charged after approximately 8 hours.

4. Disconnect the charging cable from the headphones and from the transmitter. The status LED (12) on the transmitter will extinguish. If the transmitter detects an audio signal at the input, the status LED (12) will revert to green.

Note: Since the charging current is very low, the batteries will not be overcharged even if you forget to disconnect the charging cable. If this happens, however, be sure to disconnect the charging cable as soon as you can.

Important: In order to maintain full battery capacity for as long as possible, discharge the batteries completely about once a month:

Switch the headphones ON and leave them on the shelf until the status LED (2) extinguishes. Switch the headphones off with the POWER switch (1).

Recharge the batteries as described above.

- 4.2 Setting Up the System**
1. Check that the transmitter is connected to AC power. If it is not, connect the transmitter to AC power referring to section 3.2.
 2. Disconnect the charging cable from the headphones and from the transmitter.
 3. Switch ON the audio source to which the transmitter is connected. If the transmitter detects audio signal at the INPUT jacks, the status LED (12) on the transmitter will light green.

Important Note: If no signal arrives at the transmitter input for approx. 4 minutes, the transmitter will automatically switch off and the status LED (12) will extinguish.

The transmitter will also switch off automatically if the signal level at the audio input is too low. In this case, turn the volume or headphones control on your audio source up to the point that the transmitter will switch back on.

4. Use the POWER switch (1) to switch the headphones ON, so that the green status LED (2) will light. If the status LED (2) on the headphones fails to light, the batteries are down. Charge the batteries referring to section 4.1.
5. Set the TUNING control (5) on the headphones such that you will hear the signal in the headphones clearly and free of interference. If the signal remains weak or noisy, use the A-B-C switch (10) on the transmitter to select a different carrier frequency and set the TUNING control (5) again as described above.
6. Set the VOLUME control (6) on the headphones to the desired volume level.

4.3 Replacing Batteries The capacity of any rechargeable battery will decrease over time. If you feel that you need to recharge the supplied batteries more often than would be convenient, you may consider replacing the batteries with new AAA size 1.2 V rechargeable or 1.5 V alkaline dry batteries.

4 Operation



1. Remove the ear pad from the left-hand earphone. Refer to fig. 10:
2. Remove the old batteries.
3. Insert the new batteries into the battery compartment (4). Make sure to align the batteries with the polarity marks inside the battery compartment. Refer to fig. 11:
4. Replace the ear pad on the earphone aligning the four pins on the ear pad with the matching openings in the earphone base plate.

4.4 Important Notes

1. Operating switches on or connecting the transmitter to your audio source may cause clicks which at high volume settings may affect your hearing. Therefore, be sure to set the **VOLUME** control (6) on the headphones to **minimum** before switching between different sources (tuner, turntable, CD player, etc.) or connecting the transmitter.
2. Listening over headphones at high volume levels, particularly over extended periods of time, may damage your hearing.
3. Your K 105 UHF is a radio frequency device that conforms to the strict European and FCC standards. For physical reasons that have nothing to do with the quality of the product, extremely strong interference sources may affect reception. In order to maintain interference-free listening pleasure, do not operate your K 105 UHF in the close vicinity of radio equipment, cellular telephones, or directly above TV or computer monitor picture tubes. The supplied connecting cable is long enough to allow the transmitter to be placed at a safe distance from interference sources.
Interference caused by other users of the 914 or 864 MHz LPD band are beyond AKG's control.

5 Cleaning



We recommend to clean the transmitter and headphones surfaces using a soft cloth moistened with water.

6 Troubleshooting



Symptom	Possible Cause	Remedy
1. No sound:	<ol style="list-style-type: none">1. AC adapter is not connected to transmitter and/or AC outlet.2. Transmitter is not connected to audio source.3. Connected audio source is switched off.4. Volume control on audio source is set too low.5. Headphones are switched off.6. VOLUME control on headphones is at zero.7. Batteries are low.	<ol style="list-style-type: none">1. Connect AC adapter to transmitter and/or AC outlet.2. Connect transmitter to audio source.3. Switch audio source on to feed signal to transmitter input.4. Increase audio source volume to the point that transmitter will switch back on.5. Switch headphones on.6. Set VOLUME control to desired level.7. Charge batteries.
2. Status LED on transmitter does not light:	<ol style="list-style-type: none">1. Transmitter is not connected to AC power.2. Transmitter has detected no signal at the audio input for about 4 minutes.	<ol style="list-style-type: none">1. Connect transmitter to AC power.2. Switch audio source on or increase audio source output level.



6 Troubleshooting

Symptom	Possible Cause	Remedy
3. Batteries will not be charged:	<ol style="list-style-type: none">1. Charging cable is not or loosely plugged in.2. Batteries are not correctly aligned with polarity marks.3. Headphones are ON during charging.	<ol style="list-style-type: none">1. Connect charging cable or push connectors all the way into the charging jacks.2. Check orientation of batteries inside battery compartment.3. Switch headphones OFF.
4. Mono sound:	<ol style="list-style-type: none">1. Connected audio source operates in mono mode.2. Transmitter is not correctly connected to audio source.	<ol style="list-style-type: none">1. Switch audio source to stereo mode.2. Check cable connection between transmitter and audio source.
5. Noise:	<ol style="list-style-type: none">1. Transmitter is set to the wrong carrier frequency.2. Frequency setting on headphones does not match transmitter carrier frequency.3. Audio level at transmitter input is too low.4. Input signal is noisy.5. Batteries are low.	<ol style="list-style-type: none">1. Use A-B-C switch to select different carrier frequency.2. Move about 33 ft. (10 m) away from transmitter and readjust TUNING control on headphones.3. Increase audio source volume.4. Check audio source.5. Charge batteries.
6. Distorted sound:	<ol style="list-style-type: none">1. Audio level at transmitter input is too high.2. Transmitter and headphones carrier frequencies do not match exactly.3. Batteries are low.	<ol style="list-style-type: none">1. Decrease audio source volume.2. Readjust TUNING control on headphones.3. Charge batteries.
7. Intermodulation noise:	<ol style="list-style-type: none">1. Electrical appliances with poor interference protection.2. Audio source or sound carrier defective.	<ol style="list-style-type: none">1. Switch off any "suspicious" appliances (if possible).2. Check audio source or sound carrier.
8. Headphones receive unwanted transmitters:	<ol style="list-style-type: none">1. A neighbor uses similar UHF headphones.	<ol style="list-style-type: none">1. Use A-B-C switch to select different carrier frequency and readjust TUNING control on headphones.
9. Overemphasized bass or treble range:	<ol style="list-style-type: none">1. Bass or treble control settings on audio source.	<ol style="list-style-type: none">1. Readjust bass or treble controls.

7 Specifications



System Performance

Modulation:	FM
Carrier frequency:	914 MHz (USA) or 864 MHz (EU) (LPD band)

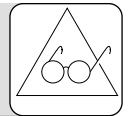
T 105 UHF Transmitter

Power supply:	9 VDC, 200 mA
Weight:	approx. 4.6 oz. (130 g)
Max. range:	approx. 330 ft. (100 m)

K 105 UHF Headphones

Power supply:	3 VDC (2 x 1.2 V AAA size NiCd rechargeable batteries supplied)
Battery life:	approx. 10 hours (NiCd rechargeable batteries)
Frequency range:	18 Hz to 20,000 Hz
Max. SPL:	>115 dB SPL
Distortion:	<1%
Weight:	approx. 7.8 oz. (220 g)
Type:	semi-open dynamic headphones

8 Warranty Conditions



AKG warrants AKG products against evident defects in material and workmanship for a period of one year from the date of original purchase for use. This Warranty does not cover damage resulting from misuse or abuse, or lack of reasonable care, or inadequate repairs performed by unauthorized service centers. Performance of repairs or replacements under this Warranty is subject to submission of the sales slip. Shipment of defective items for repair under this Warranty will be at the customer's own risk and expense. This Warranty is valid for the original purchaser only. This Warranty does not cover dry or rechargeable batteries.

Limited Warranty (valid in the United States only)

AKG warrants AKG products against evident defects in material and workmanship for a period of one year and agrees to repair or, at our option, replace any defective unit without charge for either parts or labor. This Warranty does not cover dry or rechargeable batteries.

Important: This Warranty does not cover damage resulting from accident, misuse or abuse, lack of reasonable care, the affixing of any attachment not provided with the product, loss of parts, or connecting the product to any but the specified receptacles. This Warranty is void unless service or repairs are performed by an authorized service center. No responsibility is assumed for any special, incidental, or consequential damage. However, the limitation of any right or remedy shall not be effective where such is prohibited or restricted by law. Simply take or ship your AKG products prepaid to our service department. Be sure to include your sales slip as proof of purchase date. (We will not repair transit damage under the no-charge terms of this Warranty.)

Note: No other warranty, written or oral, is authorized by AKG Acoustics.

This Warranty gives you specific legal rights, and you may also have other rights which vary from state to state. Some states do not allow the exclusion or limitation of incidental or consequential damage or limitations on how long an implied warranty lasts, so the above exclusion and limitations may not apply to you.